

## Exploitation for the Future of Water and Environment

Since its foundation in 1968, NIHON SUIKO SEKKEI CO., LTD. has continued to grow steadily for nearly 45 years responding to requests from national government and local governments as a consultant who meets the demand for improving water and living environment, and has increased its reputation as a “reliable, steady company”. In recent years, various analytical techniques and treatment and disposal technologies concerning water have been progressing remarkably. Under these circumstances, based on a great deal of its business experiences, our company will absorb and accumulate the most advanced technology also in other many special areas, grasp world tendencies and continue to study with the aim at constructing the best systems concerning water and environment.

## Corporate Profile

**Foundation:** September 1968

**Head Office:**

Forefront Tower, 3-12-1, Kachidoki, Chuo-ku, Tokyo, 104-0054, JAPAN

Department of Overseas Services

Phone: +81-3-3534-5592 / Facsimile: +81-3-3534-5520 / E-mail: Overseas@n-suiko.co.jp

**Regional Office and Branches:**

Regional Office; Tokyo, Osaka, Sendai, Nagoya, Hiroshima, Fukuoka

Branch Office; 52 locations, as of September 2011

## Main Scope of Services for Wastewater Treatment and Drainage System

**Research, Diagnosis, Evaluation:**

Flow Rate Survey / Water Quality Survey / Environmental Survey / Function of Sewerage Facilities / Facility Inventory Survey, etc.

**Master Planning, Feasibility Study, Fundamental Strategy:**

Comprehensive Basin-wide Master Planning / Region-wide Sludge Treatment System / Restructure - Rehabilitation Program

Combined Sewer Overflow (CSO) Control Measures / Flood Protection Measures (Sewerage, River) / Water Quality Conservation Plan

Advanced Wastewater Treatment / Enhancement of Recycling / Utilizing Treated Water, etc.

**Consulting Service for Approval and Licensing**

**Design Works (Basic Design, Detailed Design)**

**Construction Supervision (Strategic Supervision, Resident Supervision)**

**Management of Sewerage Mapping and Information System**

**Operation and Maintenance, Management Service**

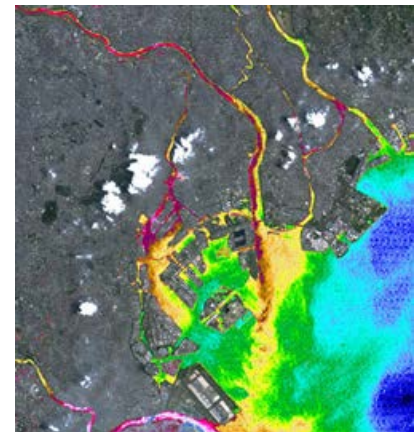
**Analysis Service:**

Water Quality Forecasting / Automatic Sanitary - Storm Sewer Designing System / Runoff Analysis System / Flood Analysis

Soil and Ground Analyses, Foundation and Structure Analyses, etc.

**Other Services:**

Master Planning and Design Works on River / Design Works and Construction Supervision on Wastes / Facility Renewal - Rehabilitation Program / Business Management System / Software Development, etc.



**Major Recent Experiences in Wastewater Treatment and Drainage System:**

- Vietnam Basic and Detail Design, Feasibility Study on Water Environment Improvement Project in Hue City / Feasibility Study on Wastewater Treatment and Drainage System for High-tech park in Hanoi City [Part] / Detailed Design for Sewerage System in Haiphong City [Part], etc.
- India Preliminary Study on Technological Design and O/M Manual for Sewerage System / Pilot Study for Project Formation for Infrastructure Development in Mumbai Metropolitan Region [Part] / Study on Capacity Building Project for O/M, etc.
- Sri Lanka Master Planning for Recovery, Rehabilitation and Development Project for Tsunami Affected Area of Region [Part], etc.
- Thailand Operation Improvement Project for Sewerage Treatment Facilities in Thailand, etc
- Indonesia Master Planning for the Recovery Rehabilitation and Reconstruction from Earthquake and Tsunami damage In Banda Aceh City [Part], etc

**Contact Information for Details**

**NIHON SUIKO SEKKEI CO., LTD.**

Department of Overseas Services

3-12-1, Kachidoki, Chuo-ku, Tokyo, 104-0054, JAPAN

E-mail: overseas@n-suiko.co.jp

http://www.n-suiko.co.jp

# Fight against Flood Damage to Lessen the Impact of Excessive Rainfalls

## Flood Control Technology using Runoff Simulation



Utilizing Runoff Simulation Technology for Sophisticated Flood Control

Flood Control Using Simulation Suggested by NIHON SUIKO SEKKEI

### Setting Goals

- Focusing Area
- Maximum Experienced Rainfall for Countermeasure
- Unexpected Scaled Rainfall



### Simulation

- Identify Flow Capacities
- Evaluation of Flood Damage
- Verification of Effectiveness after Implementation of Countermeasure Facilities
- measure Facilities



### Countermeasures

- Comprehensive Measures including;
- Structural Measures
- Non Structural Measures
- Self Help (e.g. Evacuation)

Runoff Simulation (Existing)



**Damage Prediction**  
Damages for Flooding

Runoff Simulation (Implemented)



**Promote Safer Life**  
Assuring Tolerable Flood Depth in Area

**Evaluate Effectiveness**  
Cost – Benefit Evaluate  
Justification of Measures



XP-FLOOD:2D® Enables Combined and Dynamic analysis between Pipe / Channel and Surface Flow

Manage Your Sewer Facilities More Effectively

## Management of Sewerage Mapping and Information System



Unify Management of Sewerage System

This system has valuable information about sewerage mapping, manholes, elapsed years of each facilities, and even records of restoring and replacing parts, etc... This system enables you to manage sewer facilities including sewerages and equipment in a treatment plant at the same time. You can also add the flood history and damage records of equipment. Once some trouble happen, you can immediately confirm some information you need from this system.

